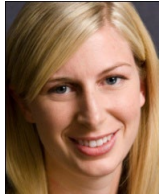


KATHERINE MOLINEUX

Principal Consultant



As Principal Consultant, Visitor Experience, Katherine leads a diversity of projects from conception to realization. Katherine specializes in interpretative planning, content development, project coordination and management.

As an interpretive planner, Katherine strives to develop interpretive plans and exhibitions that connect people to their natural and culture heritage in a meaningful way. She works closely with museum staff, stakeholders, scholars, designers, and fabricators to create relevant and responsive experiences.

Katherine is a contributing author on the topics of exhibition development and interpretive planning, including *The Manual of Museum Exhibitions*, 2nd ed. and the *The Manual of Museum Learning*, 2nd ed., in addition to numerous speaking engagements and articles.

Katherine honoured in History, receiving a Bachelor of Arts degree, and a Master of Arts degree in History from the University of Western Ontario. Prior to joining Lord Cultural Resources, Katherine worked for several museums in both Canada and the United States, developing and delivering programs to visitors of all ages and backgrounds. Her museum experience has given her insight into the needs and interests of the visitor, as well as museum staff.